



INTRINSIC
precision body jewelry

THREADLESS ENDS



THREADLESS ENDS

MARQUISE

All designs on this page are available in Titanium. Overall Size: Width x Length



**1-Gem
Marquise-Sm**
1.5mm x 3mm



**1-Gem
Marquise-Lg**
2mm x 4mm



**2-Gem
Marquise**
4.25mm x 2.8mm



**3-Gem
Marquise-Sm**
5.25mm x 3.5mm



**3-Gem
Marquise-Lg**
6.7mm x 4.5mm



**3-Gem Marquise
Symmetric**
5.7mm x 4.25mm



RH

**3-Gem Marquise
Asymmetric**
5.5mm x 3.25mm



4-Gem Marquise
7.7mm x 4.5mm



**5-Gem
Marquise-A**
4.5mm x 9mm



**5-Gem
Marquise-B**
8.75mm x 4.9mm



Marquise Setting Profile



THREADLESS ENDS

GEM

All designs on this page are available in Titanium. Overall Size: Width x Length



VENNGEM-A
4.25mm x 4mm
1.5mm Stone



VENNGEM-B
6.5mm x 6mm
1.5mm Stone



TRIQUETRAGEM
5.7mm x 6mm
1.5mm Stone



BIOHAZARDGEM
5.6mm x 5.6mm
1.5mm Stone



SUNGEM
6mm x 6mm
1.5mm Stone



VORTEXGEM
6mm x 6mm
1.5mm Stone



ANKHGEM
4mm x 7mm
1.5mm Stone



CELTIC CROSSGEM
6mm x 7mm
1.5mm Stone



SWORDGEM
4.5mm x 9.75mm
1.25mm Stone



DAGGERGEM
2.5mm x 7mm
1.25mm Stone



EYE GEM-Lg
7mm x 3.75mm
1.5mm Stone



EYE GEM-Sm
4mm x 2mm
1.5mm Stone



BUTTERFLYGEM
7mm x 5mm
1.25mm Stone



DRAGONFLYGEM
7mm x 7.25mm
1.25mm Stone



BUDDHAGEM
6.75mm x 8.5mm
1.25mm Stone



CIRGEM-A
6mm x 6mm
1.5mm Stone



CIRGEM-B
6mm x 6mm
1.5mm Stone



CIRGEM-C
6mm x 6mm
1.5mm Stone



CIRGEM-D
6mm x 6mm
1.5mm Stone



CIRGEM-E
6mm x 6mm
1.5mm Stone



CIRGEM-F-Lg
6mm x 6mm
1.5mm Stone



CIRGEM-F-Sm
4mm x 4mm
1.5mm Stone



TRIGEM-A
6.5mm x 6.5mm
1.5mm Stone



TRIGEM-B
6.5mm x 6.5mm
1.5mm Stone

THREADLESS ENDS

3D

All designs on this page are available in Titanium. Overall Size: Width x Length



SKULL-3D
4mm x 6mm



SKULLGEM-3D
4mm x 6mm
1mm Stones



ROCKET-3D
4mm x 6.5mm



ROCKETGEM-3D
4 mm x 6.5mm
1mm Stone

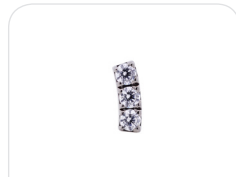


10-Petal Flower-3D
5.5mm x 5.5mm

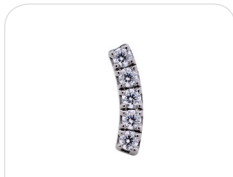
THREADLESS ENDS

MICRO PAVÉ

All designs on this page are available in Titanium. Overall Size: Width x Length



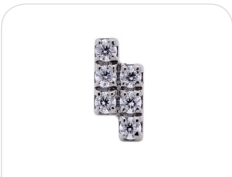
3-Gem Micro Pavé Arc
1.25mm x 3.5mm
1mm Stones



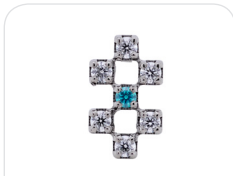
5-Gem Micro Pavé Arc
1.5mm x 5.75mm
1mm Stones



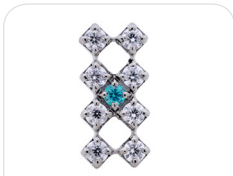
7-Gem Micro Pavé Arc
1.75mm x 7.75mm
1mm Stones



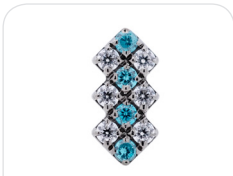
6-Gem Micro Pavé Rhode
2.5mm x 4.5mm
1mm Stones



7-Gem Micro Pavé Checker
3.5mm x 6mm
1mm Stones



9-Gem Micro Pavé Checker
3mm x 6.5mm
1mm Stones



10-Gem Micro Pavé Shield
3mm x 6.25mm
1mm Stones



14-Gem Micro Pavé Shield
3.75mm x 6.75mm
1mm Stones



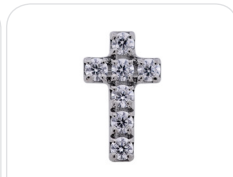
8-Gem Micro Pavé Flash
2.25mm x 7.5mm
1mm Stones



6-Gem Micro Pavé Stealth
3mm x 4.75mm
1mm Stones



9-Gem Micro Pavé Cross
6mm x 6mm
1mm Stones



7-Gem Micro Pavé Cross
3.5mm x 6mm
1mm Stones

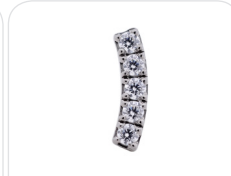
THREADLESS ENDS

PAVÉ

All designs on this page are available in Titanium. Overall Size: Width x Length



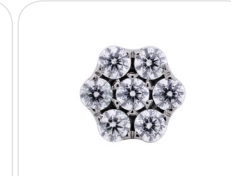
3-Gem Pavé Arc
1.75mm x 5mm
1.5mm Stones



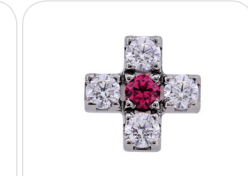
5-Gem Pavé Arc
2mm x 8.75mm
1.5mm Stones



7-Gem Pavé Arc
2.75mm x 12mm
1.5mm Stones



7-Gem Flower
4mm x 4mm
1.5mm Stones

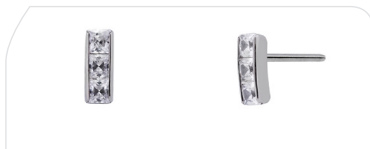


5-Gem Cross
5mm x 5mm
1.5mm Stones

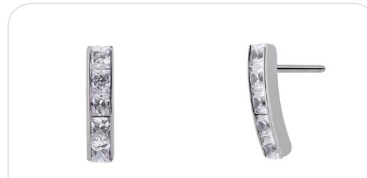
THREADLESS ENDS

ICE GEM

Overall Size: Width x Length



3-Gem Ice Gem-Sm
2mm x 5mm
1.5mm Stones
or
3-Gem Ice Gem-Lg
2.5mm x 6.5mm
2mm Stones



5-Gem Ice Gem-Sm
2mm x 8mm
1.5mm Stones
or
5-Gem Ice Gem-Lg
2.5mm x 10mm
2mm Stones



7-Gem Ice Gem-Sm
2mm x 11mm
1.5mm Stones
or
7-Gem Ice Gem-Lg
2.5mm x 14mm
2mm Stones



THREADLESS ENDS Pyramid

All designs on this page are available in Titanium. Overall Size: Width x Length



4-Gem Tetra Pyramid-A
4mm x 4mm x 1.5mm
1mm Stones



4-Gem Tetra Pyramid-B
4mm x 4mm x 2mm
1.5mm Stones



4-Gem Tetra Pyramid-C
4mm x 4mm x 3.5
1.5mm Stones



5-Gem Penta Pyramid
4mm x 4.25mm x 3.5mm
1.5mm Stones



6-Gem Hexa Pyramid
4.5mm x 5mm x 3mm
1.5mm Stones



8-Gem Princess Pyramid
3.5mm x 4.25mm x 2mm
1.5mm Stones

THREADLESS ENDS

ICON






All designs on this page are available in Titanium & Niobium. Overall Size: Width x Length

 <small>RH</small>					 <small>LH</small>
ASTRONAUT 4.5mm x 6.5mm Left or Right Hand	ROCKET 3.5mm x 6mm	PLANET 6.5mm x 3.25mm	UFO 6.5mm x 4.75mm	ALIEN 4mm x 6mm	MERMAID 3.25mm x 6mm Left or Right Hand
 <small>RH</small>					
PIN-UP GIRL 6mm x 4.25mm Left or Right Hand	SKULL 4mm x 6mm	SHAKA 6mm x 5mm	GRAPES 6mm x 6.75mm	KISS 6.5mm x 4.25mm	BUNNY 4mm x 6mm
					
LOTUS-A 6.25mm x 3.75mm	LOTUS-B 6.25mm x 4.25mm	FIRE 4mm x 6mm	HOURGLASS 4mm x 6mm	PLANCHETTE 5mm x 6mm	BUDDHA 5mm x 6mm
					
KING CROWN 6mm x 4.5mm	QUEEN CROWN 6mm x 4.25mm	HEART CROWN 6mm x 3.75mm	CLUBS CROWN 6mm x 4mm		



Threadless Ends Symbol

All designs on this page are available in Titanium & Niobium. Overall Size: Width x Length

				
LIGHTNING-A 2.5mm x 6mm	LIGHTNING-B 2.5mm x 6mm	VORTEX 8.25mm x 8.25mm	BURST-A 8mm x 8.25mm	BURST-B 6.5mm x 5.5mm




					
ARROW-A 2.25mm x 7mm	ARROW-B 2.25mm x 7mm	ARROW-C 2.25mm x 7mm	ARROW-D 2.25mm x 7mm	ARROW-F 3.25mm x 6mm	ARROW-G 3.25mm x 6mm

					
HEART-A 6mm x 6.75mm	HEART-B 3.5mm x 3mm	CRESCENT-A 5.7mm x 6mm	CRESCENT-B 2mm x 5mm	TEARDROP-A 2.5mm x 6mm	TEARDROP-B 2.5mm x 6mm

	
SWORD 4.5mm x 9.75mm	DAGGER 2.5mm x 7mm

THREADLESS ENDS Symbol

All designs on this page are available in Titanium & Niobium. Overall Size: Width x Length

				
DOLLAR 3mm x 4.5mm	EURO 4.25mm x 5.5mm	POUND 4.25mm x 5.5mm	RUPEE 4mm x 5.5mm	YEN 4.25 x 5.5mm
				
CROSS Sm - 4.25mm x 6mm Lg - 5.5mm x 8mm	CELTIC CROSS 4.25mm x 6mm	HAMSA 3.5mm x 4.5mm	ICHTHUS 6mm x 4mm	STAR OF DAVID 5.5mm x 6.5mm
				
PENTAGRAM 5.75mm x 5.75mm	OM 6.5mm x 5.5mm	ANKH 4mm x 7mm	TRINITY KNOT 6mm x 5.5mm	TRISKELE 6mm x 5.75mm
				
TREBLE CLEF 2.5mm x 6mm	8TH NOTE 4.25mm x 6mm	16TH NOTE 5.25mm x 6mm		

THREADLESS ENDS

FAUNA

All designs on this page are available in Titanium & Niobium. Overall Size: Width x Length



BUTTERFLY-Lg
8.75mm x 6mm



BUTTERFLY-Sm
6.5mm x 6.5mm



SCARAB
4mm x 6.5mm



DRAGONFLY
6.5mm x 6.5mm



DOLPHIN-Lg
8mm x 7mm



DOLPHIN-Sm
6mm x 5.25mm



SNAKE-Lg
6mm x 10mm



SNAKE-Sm
3.5mm x 6mm



SERPENT
6mm x 6mm



BAT
6mm x 2.25mm



LOBSTER
4.25mm x 6mm



CROW
7mm x 4mm



HAWK
7.5mm x 4mm



SPADEFISH
5mm x 6mm



OCTOPUS
7mm x 6mm



BUCRANIUM
6mm x 6mm



THUNDERBIRD
6.25mm x 4.5mm



SPIDERWEB
7.75mm x 7.75mm

THREADLESS ENDS

ZODIAC

All designs on this page are available in Titanium & Niobium. Overall Size: Width x Length



ARIES

5mm x 3.5mm



TAURUS

5mm x 4.75mm



GEMINI

3.75mm x 5mm



CANCER

5mm x 4.5mm



LEO

3.75mm x 5mm



VIRGO

5.5mm x 5mm



LIBRA

5.25mm x 3mm



SCORPIO

5.25mm x 4.5mm



SAGITTARIUS

2mm x 5.5mm



CAPRICORN

3.5mm x 5mm



AQUARIUS

5.25mm x 3.5mm



PISCES

3mm x 5mm



RAM

5mm x 4mm



BULL

5mm x 4.75mm



TWINS

5mm x 5mm



CRAB

5mm x 4.5mm



LION

5mm x 4.75mm



VIRGIN

4.5mm x 5.5mm



BALANCE

5mm x 4.5mm



SCORPION

4mm x 5mm



ARCHER

3.5mm x 5.5mm



GOAT

5mm x 5mm



BHEESTY

5mm x 5mm



FISH

5mm x 4.75mm

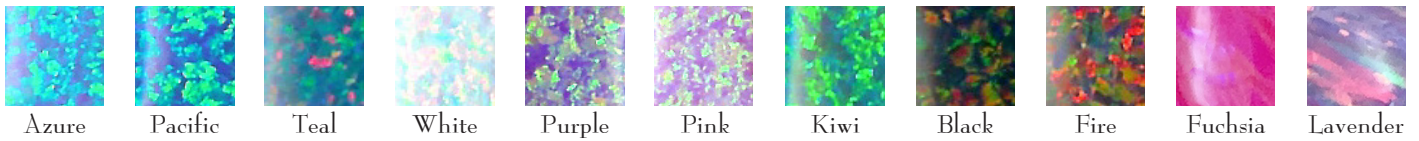
Faceted Round Birthstones

Aquamarine 1.5mm		Sapphire 1mm, 1.5mm		Amethyst 1mm, 1.25mm, 1.5mm		Pacific 1.5mm	
Mint Green 1mm, 1.25mm, 1.5mm		Emerald 1.5mm		Pink CZ 1mm, 1.25mm, 1.5mm		Fuchsia 1.5mm	
Arctic Blue 1.5mm		Peridot 1.5mm		Garnet 1.5mm		White Opal 1.5mm	
Blue Zircon 1mm		Citrine 1.5mm		Ruby 1.5mm		Black Opal 1.5mm	
Ocean Gray 1.5mm		Black CZ 1mm, 1.25mm, 1.5mm		Champagne 1mm, 1.25mm, 1.5mm			

ARRIVED EARLY

Lab Opal

Cabochon Cut | For Bezel Setting only



Princess Cut

1.5mm & 2mm Princess Cut

Aquamarine, Mint Green, Arctic, Blue Zircon,
Black CZ, Amethyst, Pink CZ, Ruby, Champagne,
Frosty Mint & Orange Garnet

Diamonds

1.5mm	VS White Diamond
1.5mm	Black Diamond

Lifetime Limited Warranty

ALL JEWELRY GUARANTEED FOR LIFE AGAINST DEFECTS IN MATERIALS AND WORKMANSHIP EXCEPT WHERE OTHERWISE NOTED. ANY RETURNED MERCHANDISE MUST HAVE A RETURNED MATERIALS AUTHORIZATION NUMBER ISSUED BY INTRINSIC BODY.

Forum Selection & Venue

Any dispute that arises between you and Intrinsic Body relating to a Return Request will be subject to the laws of the State of California. By initiating a Return Request, you also agree that the Superior Court for the State of California, County of San Francisco is the appropriate venue to resolve any legal action.

Attorneys' Fees & Costs; Mediation

In the event of a dispute relating to a Return Request, the prevailing party shall be entitled to an award of reasonable attorneys' fees and costs. In any dispute arising from a Return Request, the prevailing party is entitled to attorney fees if, and only if, it has attempted to resolve the matter through mediation before commencing the legal action.

Effective Date & Version

Intrinsic Body may unilaterally update the terms and contents of this Return Policy & Procedure at any time, without notice. The Effective Date is January 1, 2022. This is Version 2.0 of the Return Policy & Procedure.

RETURN POLICY and LIMITED WARRANTY

For nearly two decades, Intrinsic Body, has been a world leader in premium quality body jewelry. It is extremely rare that a piece of jewelry needs to be returned to us. However, as with any jewelry, care must be taken to ensure years of enjoyment. Should you need to send back a piece for repair or replacement, we have an easy to follow Return Procedure (see below).

Limited Warranty

Every product sold by Intrinsic Body, except for the Threaded Stone Gemballs, has a limited warranty against any manufacturer's defects (e.g., defects caused exclusively by the workmanship, or materials used to create the piece of jewelry) (the "Limited Warranty"). Intrinsic Body, in its sole discretion, may repair, replace, or provide store credit to you if you complete a Return Request as outlined below and if Intrinsic Body determines the Limited Warranty applies to the subject of your Return Request.

The Limited Warranty does not extend or apply to the Threaded Stone gemballs because the Threaded Stone Gemballs are made with adhesive (glue) that has a unique bonding property that varies with each individual stone. Although problems are rare, Intrinsic Body recommends keeping some spares in stock.

Return Procedure :

Follow these steps to ensure that your Return Request is processed swiftly

Return Procedure :

- Send an email to Intrinsic Body at tech@intrinsicbody.com to make a return request (the “Return Request”).
- In the subject line of the email write “RETURN REQUEST” (use all caps).
- In the body of the email: (a) explain why you would like to return the item, (b) provide your invoice number*, (c) provide a photograph of the item you wish to return in its current state, and (d) the best telephone number to call to reach you between 9:00 am and 4:00 pm PST, Monday through Friday. Once Intrinsic Body reviews your Return Request, verifies your invoice number, and determines that the Limited Warranty is likely to cover the piece, then Intrinsic Body will provide you with a Return Materials Authorization Number (an “RMA No.”)
- Place a copy of the Return Request (i.e., a print-out of your email) in the box along with the piece of jewelry that you will ship to Intrinsic Body. Write “RMA” and your entire RMA No. in large, dark numbers on the outside of the box.

Please review and follow the United States Postal Service’s instructions for shipping small items of jewelry through the mail:

Odd-Shaped Items in Paper Envelopes:

Pens, pencils, key rings, bottle caps, and other similar odd-shaped items are not permitted in letter-size or paper envelopes to prevent damage during postal processing. If an odd-shaped item is not properly wrapped, it could burst through the envelope and cause injury to employees and damage to USPS processing equipment. Flat-size automation mail is subject to the uniform thickness requirement in 101.2.4.

***DO NOT MAIL JEWELRY TO Intrinsic Body IN A PLAIN PAPER ENVELOPE. IT WILL BE RETURNED-TO-SENDER UNOPENED AND UNPROCESSED.**

You will be responsible for the costs and fees (and any damage) associated with shipping the piece to and from us.



© Intrinsic Body 2023
Prices subject to change
without notice