

2024 Titanium



INTRINSIC
precision body jewelry

WHAT'S BEHIND THE INTRINSIC BODY BRAND?

*Our master jewelers expertise and knowledge comes from an extensive background in industrial engineering, specifically in the aeronautical and medical fields where precision is key. This knowledge and expertise informs every aspect of the **INTRINSIC BODY** brand, from design specifications, fabrication methods and techniques to the selection and design of components and equipment used and the best workflow practices implemented to produce each piece.*

OUR PHILOSOPHY

*Approaching the design and creation of fine body jewelry like the manufacture of a precision jet engine or medical device makes sense for every element that goes into the work to be of optimum quality. Therefore, only the highest grade materials are used at **INTRINSIC BODY**: medical implant grade titanium and stainless steel, fine gold, and semiprecious gemstones. All materials are chosen for their intrinsic beauty and biocompatibility. Every piece of body jewelry produced at **INTRINSIC BODY** is made with the promise that your jewelry will be an intrinsic part of you for many years to come. We endeavor to create pieces that will stand the test of time in every way.*

QUALITY

BEAUTY

PRECISION





MICRO – INTEGRATION
OF TECHNOLOGY
IN THE HUMAN BODY



IMPLANT GRADE TITANIUM

Barbells



gauge

16g	Straight
14g	
12g	
10g	
8g	

Curved

Circular

Surface Barbell

Straight Barbell standard ball size

16g	1/8" Balls under 1/2" length
	5/32" Balls 1/2" length and over
14g	1/8" Balls under 1/2" length
	3/16" Balls 1/2" length and over
12g	5/32" Balls under 1/2" length
	3/16" Balls 1/2" length and over
10g	7/32" Balls
8g	1/4" Balls

Curved Barbell standard ball size

16g	1/8" Balls
14g	3/16" Balls
12g	3/16" Balls

Curved Barbells lengths:

16g: 3/16", 1/4", 5/16", 3/8", 7/16", 1/2"
 14g: 1/4", 5/16", 3/8", 7/16", 1/2", 9/16", 5/8", 3/4
 12g: 1/4", 5/16", 3/8", 7/16", 1/2", 9/16", 5/8", 3/4, 7/8"

Circular Barbell standard ball size

16g	1/8" Balls
14g	1/8" Balls
12g	5/32" Balls

Circular Barbells Inner Diameter:

16g: 1/4", 5/16", 3/8", 7/16"
 14g: 1/4", 5/16", 3/8", 7/16", 1/2", 9/16", 5/8"
 12g: 5/16", 3/8", 7/16", 1/2", 9/16", 5/8"

Surface Barbell standard disk size

14g	4mm Disk
-----	----------

Surface Barbell rise height:
2mm, 2.5mm, 3mm

MicroDermal Anchors

2.0mm, 2.5mm or 3.0mm rise, 14g



Standard Asymmetric



Standard No Holes



Equal Length EQ



No Holes EQ



Nose Screws

3/4" length, 20g or 18g

Prong Faceted	1.5mm
	2.0mm
Bezel Faceted	1.5mm
	2.0mm
Plain Ball	1.5mm
	1.75mm
	2.0mm
8-Gem Flower	4.0mm



Threaded Labrets and Labret Backs

1-pc Labret back lengths: 5/32", 3/16", 1/4", 7/32", 9/32", 5/16", 11/32", 3/8", 7/16" and 1/2"

New!

1-Piece Labret Back
(2.5mm M&M Disc)



18g
2.5mm disc

1-Piece Labret Back
(4mm Disc)



18g
4mm disc
16g - 14g
4.0mm disc

3-Piece Labret
(1/8" ball + post + 4mm disc)



16g - 14g

Septum Retainer



16g	Septum Retainer
14g	Septum Retainer



Clickers

Radiance Clicker
20g or 18g



1/4" ID
5/16" ID
3/8" ID

Wearing Surface Lengths:
1/4" ID = 3/16" w.s. (12 - Gem)
5/16" ID = 1/4" w.s. (14 - Gem)
3/8" ID = 5/16" w.s. (18 - Gem)

New!

Micro Pavé Radiance Clicker
18g or 16g



1/4" ID
5/16" ID
3/8" ID

Wearing Surface Lengths:
1/4" ID = 5.5mm w.s. (17 - Gem)
1/4" ID = 5mm w.s. (18 - Gem)
5/16" ID = 5.5mm w.s. (23 - Gem)
3/8" ID = 5.75mm w.s. (28 - Gem)

↑↑↑↑↑↑↑↑

New!

Pavé Radiance Clicker
18g or 16g



3/8" ID
7/16" ID

Wearing Surface Lengths:
3/8" ID = 6mm w.s. (18 - Gem)
7/16" ID = 8mm w.s. (19 - Gem)
7/16" ID = 6mm w.s. (21 - Gem)

Nipple Clicker
14g or 12g



7/16" w.s. 11 - Gem
1/2" w.s. 11 - Gem
9/16" w.s. 13 - Gem
5/8" w.s. 13 - Gem

Septum Clickers

18g, 16g or 14g

5/16" ID or 3/8" ID, 5mm wearing surface.
All 2mm stones or 2mm with a 2.5mm Center Stone



0 - Gem

1 - Gem	Bezel	Prong
3 - Gem		
5 - Gem		
7 - Gem		
9 - Gem		



New!

Ice Gem Mini Curves

1/4", 5/16", 3/8" length, 16g



3-Gem

3 - Gem
5 - Gem
7 - Gem

1.5mm Channel-Set
Princess Cut Stones
Standard ball size: 1/8"

See Pg. 20 for 1.5mm stone color options



5-Gem



7-Gem

Gem Eyebrow Curves

1/4", 5/16", 3/8", 7/16" length, 16g



Bezel
1 - Gem
2 - Gem

2.5mm Stones

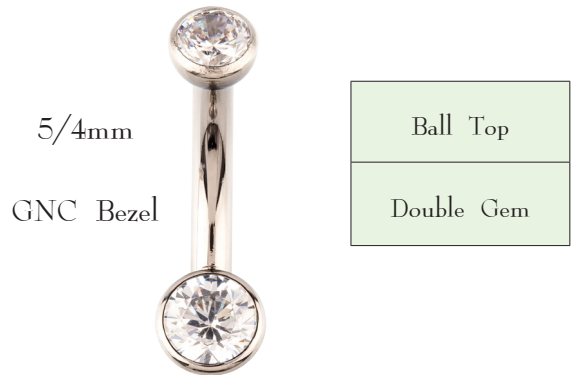


Gem Navel Curves

1/4", 5/16", 3/8", 7/16", 1/2" length, 1/4g or 1/2g



Ball Top
Double Gem



Ball Top
Double Gem

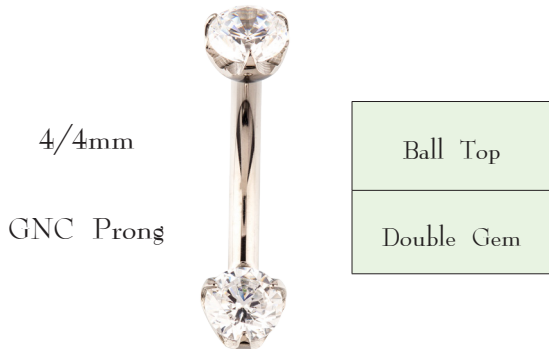


Ball Top
Double Gem

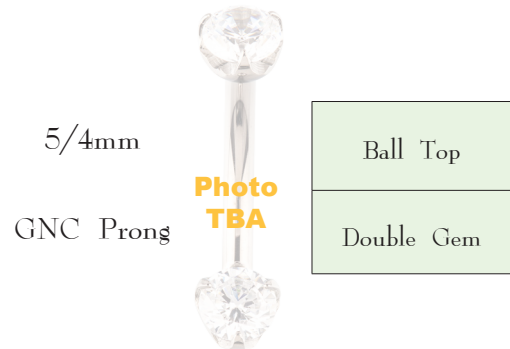


Ball Top
Double Gem

7mm stone available in Clear CZ only



Ball Top
Double Gem



Ball Top
Double Gem

Photo TBA



Ball Top
Double Gem



Ball Top
Double Gem

7mm stone available in Clear CZ only

TITANIUM



New!

Pavé Halo Ring Navel Curves

1/4", 5/16", 3/8", 7/16", 1/2" length 14g - 12g

See Pg. 20 for 1mm stone color options



6/4mm

38-Gem Pavé
Double Halo

Single Halo
Double Halo



5/4mm

34-Gem Pavé
Double Halo

Single Halo
Double Halo



4/4mm

32-Gem Pavé
Double Halo

Single Halo
Double Halo



New!

Ice Gem Curves

1/4", 5/16", 3/8", 7/16", 1/2" length 14g - 12g



3-Gem



5-Gem



7-Gem

3 - Gem
5 - Gem
7 - Gem

2mm Channel-Set
Princess Cut Stones
Standard ball size: 5/32"

See Pg. 20 for 2mm stone color options



Multi-Gem Navel Curves

1/4", 5/16", 3/8", 7/16", 1/2" length, 14g - 12g



3 - Gem Total	Bezel
4 - Gem Total	



Turquoise Ti
Bezel GNC



White Opal

Black Opal

Kiwi Opal

Pacific Opal

Azure Opal

Fire Opal

Teal Opal

Pink Opal

3 Gems Total

4 Gems Total

Multi-Gem Navel Curves

1/4", 5/16", 3/8", 7/16", 1/2" length. 14g - 12g



3-Gem CZ



4-Gem CZ

3 - Gem Total	Prong
4 - Gem Total	
Faceted Opal in White, Black, Pacific & Fuchsia Only	



White Opal



Black Opal



Pacific Opal

Princess Cut Gem Navel Curves

1/4", 5/16", 3/8", 7/16", 1/2" length 14g - 12g

5mm - 1 Gem	Prong Princess Cut
5mm - 2 Gem	
6mm - 1 Gem	
2 - Gem Total	
3 - Gem Total	
4 - Gem Total	



2-Gem CZ



3-Gem CZ



4-Gem CZ

Prong -with- Chains

1/4", 5/16", 3/8", 7/16", 1/2" length, 14g - 12g



2-Gem CZ
w/14K Yellow Gold 5 Chains

2 - Gem with 3 Gold Chains 14K White or Yellow
2 - Gem with 5 Gold Chains 14K White or Yellow
2 - Gem with 3 Silver Chains Rhodium Plated Sterling Silver
2 - Gem with 5 Silver Chains Rhodium Plated Sterling Silver



2-Gem CZ
w/14K White Gold 5 Chains



2-Gem CZ
w/Rhodium Plated
Sterling Silver 3 Chains

Gem Navel Curves -with- 6-Gem Charm

1/4", 5/16", 3/8", 7/16", 1/2" length
14g - 12g



6/4mm
Bezel

Bezel
Prong

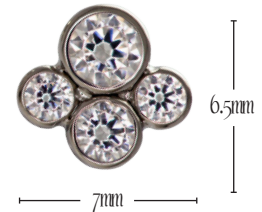
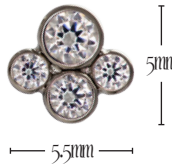


6/4mm
Prong

Multi-Gem Clusters

16g - 14g - Threadless Pins

	<p>3 - Gem Straight 1.5mm, 2.0mm, 1.5mm</p>
	<p>3 - Gem Arc 1.5mm, 2.0mm, 1.5mm</p>
	<p>4 - Gem Small Cluster 2.5mmx1, 2.0mmx1, 1.5mmx2</p>
	<p>4 - Gem Large Cluster 3.0mmx1, 2.5mmx1, 2.0mmx2</p>
	<p>5 - Gem Straight 1.5mm, 2.0mm, 2.5mm, 2.0mm, 1.5mm</p>
	<p>5 - Gem Arc 1.5mm, 2.0mm, 2.5mm, 2.0mm, 1.5mm</p>
<p>Limited Colors for Spiral Clusters</p> <p>1.75mm & 2.25mm Gems available in CLEAR CZ, Black CZ OR MINT ONLY</p>	<p>5 - Gem Spiral Right 2.5mm, 2.25mm, 2.0mm, 1.75mm, 1.5mm</p>
	<p>5 - Gem Spiral Left 2.5mm, 2.25mm, 2.0mm, 1.75mm, 1.5mm</p>
	<p>5 - Gem Tight Spiral R 2.5mm, 2.25mm, 2.0mm, 1.75mm, 1.5mm</p>
	<p>5 - Gem Tight Spiral L 2.5mm, 2.25mm, 2.0mm, 1.75mm, 1.5mm</p>
	<p>7 - Gem Swirl Right 2.5mmx1, 2.0mmx3, 1.5mmx3</p>
	<p>7 - Gem Swirl Left 2.5mmx1, 2.0mmx3, 1.5mmx3</p>



Threaded Gem Ends

Bezel

1.5mm 16g
2.0mm 16g - 14g
2.5mm 16g - 14g
3mm 16g
5mm 14g



Prong

16g - 14g

2.0mm
2.5mm
3.0mm
4.0mm
5.0mm



Gem Ball

2.5mm 10g
4.0mm 14g



Cabochon

2mm 16g - 14g
3mm 16g - 14g
4mm 14g



New!

Rose Cut

4mm 14g

See Pg. 20 for rose cut stone color options



New!

Dice

4mm x 4mm
14g

0-Gem
20-Gem 1mm stone size



New!

16-Gem Pavé Halo Ring

14g

4mm



Threaded Connector Gems

16g - 14g

2.5mm	Bezel	
3.0mm		Prong



Threaded Flower Ends



6mm Prong Flower with Pacific Opal

See Pg. 20 for 1mm & 1.25mm stone color options



4mm Flower
Prong

16g - 14g

Also available as threadless

Total number of gems 8
1.00mm x 7
1.5mm center



6mm Flower
Prong

16g - 14g

Also available as threadless

Total number of gems 10
1.25mm x 9
3.0mm center



6mm Flower
Bezel

16g - 14g

Total number of gems 7
1.5mm x 6
Can have Cabochons
2.0mm center

4mm Flower	Prong	
6mm Flower		Bezel



Threadless ends

size

1.5mm	Bezel
2.0mm	
2.5mm	
3.0mm	
4.0mm	



size

1.5mm	Prong
2.0mm	
2.5mm	
3.0mm	
4.0mm	



size

1.5mm	Plain ball
1.75mm	
2.0mm	
2.5mm	
3.0mm	
4.0mm	

New!



size

1.5mm	Discs
2.0mm	
2.5mm	
3.0mm	
4.0mm	

New!



size Stars

3mm


size

2.0mm	Cabochons
2.5mm	
3.0mm	
4.0mm	



size

1.5mm	Princess
2.0mm	



Threadless Backs

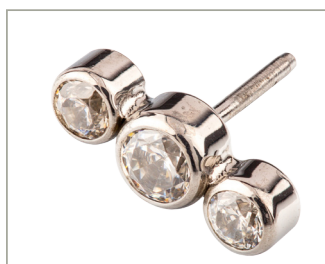
Lengths: 5/32", 3/16", 1/4", 7/32", 9/32", 5/16", 11/32", 3/8", 7/16" and 1/2"

New!



18g	2.5 M&M
18g	4mm DISC
16g	4mm DISC
14g	4mm DISC

		size		
Threadless Spikes	2mm x 2mm			
	2mm x 4mm			
	2.5mm x 1.5mm			
	2.5mm x 2.5mm			
	2.5mm x 5mm			
	3mm x 3mm			
	3mm x 6mm			



Threadless Clusters
Also Available.
See Page 11 for
possible styles

Check out more designs in our
Threadless Ends Catalog!!!

Nano-Loc Barbells

Aligned Threadless Barbells 12g or 14g



14g	Straight Barbell Complete
12g	Straight Barbell Complete
-	Post Only
-	CZ End



Barbells Ends



Ball

16g	3/32"
	1/8", 5/32"
14g	1/8", 5/32", 3/16"
	7/32"
12g	5/32", 3/16"
	7/32"
10g	3/16"
	7/32"
	1/4"
8g	7/32"
	1/4"



Disc

16g	3mm, 4mm
	5mm
14g	3mm, 4mm
	5mm
	6mm
12g	3mm, 4mm
	5mm
	6mm



M&M

14g	6mm
12g	6mm
10g	8mm
8g	8mm



Spike

16g	2.5mm x 2mm
	3mm x 2.5mm
	3mm x 4mm
14g	3mm x 2.5mm
	3mm x 4mm
	4mm x 6mm

Base diameter x Length

Magic Plugs

Gem Front

Magic Back

Gem Back

Lengths : 3/16", 1/4", 5/16"

2g	2g	0g
0g	0g	00g
00g	00g	

						
Black Onyx	Black Sardonyx	Blue Lace Agate	Chrysocolla	Gold Stone	Hematite	Lapis Lazuli
						
CZ	CZ Reverse	White Opal	Black Opal	Tiger's Eye	Red Tiger's Eye	Turquoise

Other Available Gems: Blue Agate, Jade, Jasper, Pacific Opal, Fire Opal



Multi-Gem & LED Magic Plugs

Muti- Gem Plug Lengths : 3/16", 7/32", 1/4", 5/16"

Plugs With LED Lengths : 5/16" only

00g	25 - Gem
00g	16 - Gem
00g	24 - LED with Glass Cover
00g	24 - LED with 25 - Gem
00g	24 - LED with 16 - Gem
00g	LED Plugs Display
00g	Battery Packs

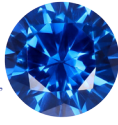


Faceted Round Birthstones

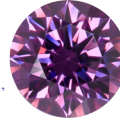
Aquamarine
1.5mm, 2mm, 2.5mm, 3mm,
4mm, 5mm & 6mm



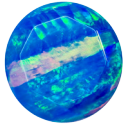
Sapphire
1mm, 1.5mm, 2mm, 2.5mm,
3mm, 4mm, 5mm & 6mm



Amethyst
1mm, 1.25mm, 1.5mm, 2mm,
2.5mm, 3mm, 4mm,
5mm & 6mm



Pacific
1.5mm, 2mm, 2.5mm, 3mm,
4mm, 5mm & 6mm
Prong only in GNC



Mint Green
1mm, 1.25mm, 1.5mm,
1.75mm, 2mm, 2.25mm,
2.5mm, 3mm, 4mm,
5mm & 6mm



Emerald
1.5mm, 2mm, 2.5mm, 3mm,
4mm, 5mm & 6mm



Pink CZ
1mm, 1.25mm, 1.5mm, 2mm,
2.5mm, 3mm, 4mm,
5mm & 6mm



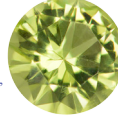
Fuchsia
4mm, 5mm & 6mm
Prong only in GNC



Arctic Blue
1.5mm, 2mm, 2.5mm, 3mm,
4mm, 5mm & 6mm



Peridot
1.5mm, 2mm, 2.5mm, 3mm,
4mm & 5mm



Garnet
1.5mm, 2mm, 2.5mm, 3mm,
4mm, 5mm & 6mm



White Opal
1.5mm, 2mm, 2.5mm, 3mm,
4mm, 5mm & 6mm
Prong only in GNC



Blue Zircon
1mm, 3.5mm, 4mm,
5mm & 6mm



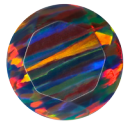
Citrine
1.5mm, 2mm, 2.5mm, 3mm,
4mm, 5mm & 6mm



Ruby
1.5mm, 2mm, 2.5mm, 3mm,
4mm & 6mm



Black Opal
1.5mm, 2mm, 2.5mm, 3mm,
4mm, 5mm & 6mm
Prong only in GNC



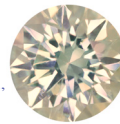
Ocean Gray
1.5mm, 2mm, 2.5mm
& 3mm



Black CZ
1mm, 1.25mm, 1.5mm,
1.75mm, 2mm, 2.25mm,
2.5mm, 3mm, 4mm,
5mm & 6mm

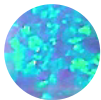


Champagne
1mm, 1.25mm, 1.5mm, 2mm,
2.5mm, 3mm, 4mm,
5mm & 6mm

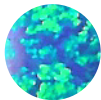


Lab Opal

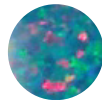
1.5mm, 2mm, 2.5mm, 3mm, 4mm, 5mm & 6mm Cabochon Cut



Azure



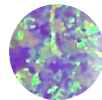
Pacific



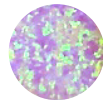
Teal



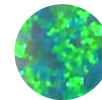
White



Purple



Pink



Kiwi



Black



Fire



Fuchsia



Lavender

Rose Cut



Clear



Jet Black



Amethyst



Ruby



Peridot



Sapphire



Tanzanite



Aqua

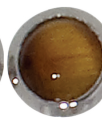


Champagne

Natural Cabochon



Amethyst



Tigerseye



Black Onyx



Turquoise



Citrine



Peridot



Jade



Iolite



Garnet

2mm Nose Screws & 2mm Threaded Cabochon Ends only

● Available in 3mm

◆ Available in 4mm

Princess Cut



Amethyst
4mm, 5mm & 6mm



Pink
4mm, 5mm & 6mm



Swiss Blue
4mm, 5mm & 6mm

1.5mm & 2mm Princess Cut

Aquamarine, Mint Green, Arctic, Blue Zircon,

Black CZ, Amethyst, Pink CZ,

Ruby, Champagne & Frosty Mint

Genuine Diamonds

size	white diamonds
1.5mm	VS
2.0mm	VS
2.5mm	VS
3.0mm	VS

size	black diamonds
1.5mm	Black
2.0mm	Black
2.5mm	Black

RETURN POLICY and LIMITED WARRANTY

For nearly two decades, Intrinsic Body, has been a world leader in premium quality body jewelry. It is extremely rare that a piece of jewelry needs to be returned to us. However, as with any jewelry, care must be taken to ensure years of enjoyment. Should you need to send back a piece for repair or replacement, we have an easy to follow Return Procedure (see below).

Limited Warranty

Every product sold by Intrinsic Body, except for the Threaded Stone Gemballs, has a limited warranty against any manufacturer's defects (e.g., defects caused exclusively by the workmanship, or materials used to create the piece of jewelry) (the "Limited Warranty"). Intrinsic Body, in its sole discretion, may repair, replace, or provide store credit to you if you complete a Return Request as outlined below and if Intrinsic Body determines the Limited Warranty applies to the subject of your Return Request.

The Limited Warranty does not extend or apply to the Threaded Stone gemballs because the Threaded Stone Gemballs are made with adhesive (glue) that has a unique bonding property that varies with each individual stone. Although problems are rare, Intrinsic Body recommends keeping some spares in stock.

Return Procedure :

Follow these steps to ensure that your Return Request is processed swiftly

Return Procedure :

- Send an email to Intrinsic Body at tech@intrinsicbody.com to make a return request (the “Return Request”).
- In the subject line of the email write “RETURN REQUEST” (use all caps).
- In the body of the email: (a) explain why you would like to return the item, (b) provide your invoice number*, (c) provide a photograph of the item you wish to return in its current state, and (d) the best telephone number to call to reach you between 9:00 am and 4:00 pm PST, Monday through Friday. Once Intrinsic Body reviews your Return Request, verifies your invoice number, and determines that the Limited Warranty is likely to cover the piece, then Intrinsic Body will provide you with a Return Materials Authorization Number (an “RMA No.”)
- Place a copy of the Return Request (i.e., a print-out of your email) in the box along with the piece of jewelry that you will ship to Intrinsic Body. Write “RMA” and your entire RMA No. in large, dark numbers on the outside of the box.

Please review and follow the United States Postal Service’s instructions for shipping small items of jewelry through the mail:

Odd-Shaped Items in Paper Envelopes:

Pens, pencils, key rings, bottle caps, and other similar odd-shaped items are not permitted in letter-size or paper envelopes to prevent damage during postal processing. If an odd-shaped item is not properly wrapped, it could burst through the envelope and cause injury to employees and damage to USPS processing equipment. Flat-size automation mail is subject to the uniform thickness requirement in 101.2.4.

***DO NOT MAIL JEWELRY TO Intrinsic Body IN A PLAIN PAPER ENVELOPE. IT WILL BE RETURNED-TO-SENDER UNOPENED AND UNPROCESSED.**

You will be responsible for the costs and fees (and any damage) associated with shipping the piece to and from us.

Lifetime Limited Warranty

ALL JEWELRY GUARANTEED FOR LIFE AGAINST DEFECTS IN MATERIALS AND WORKMANSHIP EXCEPT WHERE OTHERWISE NOTED. ANY RETURNED MERCHANDISE MUST HAVE A RETURNED MATERIALS AUTHORIZATION NUMBER ISSUED BY INTRINSIC BODY.

Forum Selection & Venue

Any dispute that arises between you and Intrinsic Body relating to a Return Request will be subject to the laws of the State of California. By initiating a Return Request, you also agree that the Superior Court for the State of California, County of San Francisco is the appropriate venue to resolve any legal action.

Attorneys' Fees & Costs; Mediation

In the event of a dispute relating to a Return Request, the prevailing party shall be entitled to an award of reasonable attorneys' fees and costs. In any dispute arising from a Return Request, the prevailing party is entitled to attorney fees if, and only if, it has attempted to resolve the matter through mediation before commencing the legal action.

Effective Date & Version

Intrinsic Body may unilaterally update the terms and contents of this Return Policy & Procedure at any time, without notice. The Effective Date is January 1, 2022. This is Version 2.0 of the Return Policy & Procedure.



FOR SALES INQUIRIES PLEASE CONTACT US AT:

EMAIL: INTRINSICBODY@GMAIL.COM

WEB: WWW.INTRINSICBODY.COM

© Intrinsic Body 2024
Prices subject to change without notice