

2024 Titanium & Niobium Threadless Ends





INTRINSIC
precision body jewelry

THREADLESS ENDS

MARQUISE

All designs on this page are available in Titanium. Overall Size: Width x Length

 <p>1-Gem Marquise-Sm 1.5mm x 3mm</p>	 <p>1-Gem Marquise-Lg 2mm x 4mm</p>	 <p>2-Gem Marquise 4.25mm x 2.8mm</p>
---	---	---

 <p>3-Gem Marquise-Sm 5.25mm x 3.5mm</p>	 <p>3-Gem Marquise-Lg 6.7mm x 4.5mm</p>	 <p>3-Gem Marquise Symmetric 5.7mm x 4.25mm</p>	 <p>3-Gem Marquise Asymmetric 5.5mm x 3.25mm Reverse Orientation Available</p>
--	---	--	--

 <p>4-Gem Marquise 7.7mm x 4.5mm</p>	 <p>5-Gem Marquise-A 4.5mm x 9mm</p>	 <p>5-Gem Marquise-B 8.75mm x 4.9mm</p>
--	--	--



Marquise Setting Profile



THREADLESS ENDS

GEM

All designs on this page are available in Titanium. Overall Size: Width x Length



VENNGEM-A
4.25mm x 4mm
1.5mm Stone



VENNGEM-B
6.5mm x 6mm
1.5mm Stone



TRIQUETRAGEM
5.7mm x 6mm
1.5mm Stone



BIOHAZARDGEM
5.6mm x 5.6mm
1.5mm Stone



SUNGEM
6mm x 6mm
1.5mm Stone



VORTEXGEM
6mm x 6mm
1.5mm Stone



ANKHGEM
4mm x 7mm
1.5mm Stone



CELTIC CROSSGEM
6mm x 7mm
1.5mm Stone



SWORDGEM
4.5mm x 9.75mm
1.25mm Stone



DAGGERGEM
2.5mm x 7mm
1.25mm Stone



EYE GEM-Lg
7mm x 3.75mm
1.5mm Stone



EYE GEM-Sm
4mm x 2mm
1.5mm Stone



BUTTERFLYGEM
7mm x 5mm
1.5mm Stone



DRAGONFLYGEM
7mm x 7.25mm
1.25mm Stone



BUDDHAGEM
6.75mm x 8.5mm
1.25mm Stone



CIRGEM-A
6mm x 6mm
1.5mm Stone



CIRGEM-B
6mm x 6mm
1.5mm Stone



CIRGEM-C
6mm x 6mm
1.5mm Stone



CIRGEM-D
6mm x 6mm
1.5mm Stone



CIRGEM-E
6mm x 6mm
1.5mm Stone



CIRGEM-F-Lg
6mm x 6mm
1.5mm Stone



CIRGEM-F-Sm
4mm x 4mm
1.5mm Stone



TRIGEM-A
6.5mm x 6.5mm
1.5mm Stone



TRIGEM-B
6.5mm x 6.5mm
1.5mm Stone

THREADLESS ENDS

3 D

All designs on this page are available in Titanium. Overall Size: Width x Length



SKULL-3D
4mm x 6mm



SKULLGEM-3D
4mm x 6mm
1mm Stones



ROCKET-3D
4mm x 6.5mm



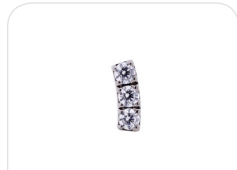
ROCKETGEM-3D
4 mm x 6.5mm
1mm Stone



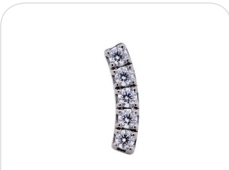
10-Petal Flower-3D
5.5mm x 5.5mm

THREADLESS ENDS MICRO PAVÉ

All designs on this page are available in Titanium. Overall Size: Width x Length



3-Gem Micro Pavé Arc
1.25mm x 3.5mm
1mm Stones



5-Gem Micro Pavé Arc
1.5mm x 5.75mm
1mm Stones



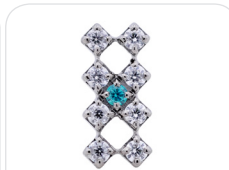
7-Gem Micro Pavé Arc
1.75mm x 7.75mm
1mm Stones



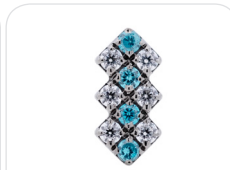
6-Gem Micro Pavé Rhode
2.5mm x 4.5mm
1mm Stones



7-Gem Micro Pavé Checker
3.5mm x 6mm
1mm Stones



9-Gem Micro Pavé Checker
3mm x 6.5mm
1mm Stones



10-Gem Micro Pavé Shield
3mm x 6.25mm
1mm Stones



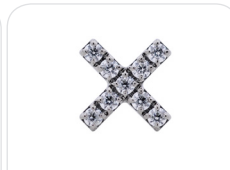
14-Gem Micro Pavé Shield
3.75mm x 6.75mm
1mm Stones



8-Gem Micro Pavé Flash
2.25mm x 7.5mm
1mm Stones



6-Gem Micro Pavé Stealth
3mm x 4.75mm
1mm Stones



9-Gem Micro Pavé Cross
6mm x 6mm
1mm Stones



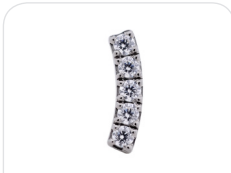
7-Gem Micro Pavé Cross
3.5mm x 6mm
1mm Stones

THREADLESS ENDS PAVÉ

All designs on this page are available in Titanium. Overall Size: Width x Length



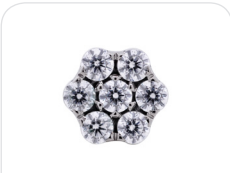
3-Gem Pavé Arc
1.75mm x 5mm
1.5mm Stones



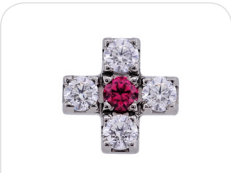
5-Gem Pavé Arc
2mm x 8.75mm
1.5mm Stones



7-Gem Pavé Arc
2.75mm x 12mm
1.5mm Stones



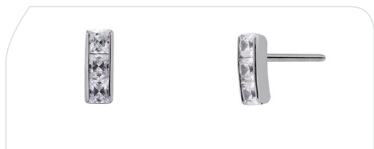
7-Gem Flower
4mm x 4mm
1.5mm Stones



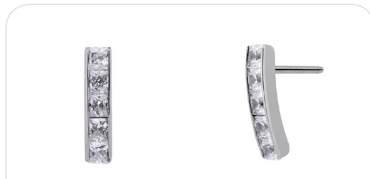
5-Gem Cross
5mm x 5mm
1.5mm Stones

THREADLESS ENDS ICE GEM

Overall Size: Width x Length



3-Gem Ice Gem-Sm
2mm x 5mm
1.5mm Stones
or
3-Gem Ice Gem-Lg
2.5mm x 6.5mm
2mm Stones



5-Gem Ice Gem-Sm
2mm x 8mm
1.5mm Stones
or
5-Gem Ice Gem-Lg
2.5mm x 10mm
2mm Stones



7-Gem Ice Gem-Sm
2mm x 11mm
1.5mm Stones
or
7-Gem Ice Gem-Lg
2.5mm x 14mm
2mm Stones



THREADLESS ENDS Pyramid

All designs on this page are available in Titanium. Overall Size: Width x Length



4-Gem Tetra Pyramid-A
4mm x 4mm x 1.5mm
1mm Stones



4-Gem Tetra Pyramid-B
4mm x 4mm x 2mm
1.5mm Stones



4-Gem Tetra Pyramid-C
4mm x 4mm x 3.5
1.5mm Stones



5-Gem Penta Pyramid
4mm x 4.25mm x 3.5mm
1.5mm Stones



6-Gem Hexa Pyramid
4.5mm x 5mm x 3mm
1.5mm Stones



8-Gem Princess Pyramid
3.5mm x 4.25mm x 2mm
1.5mm Stones



Threadless Ends ICON

All designs on this page are available in Titanium & Niobium. Overall Size: Width x Length
Assymetric items can be configured in a REVERSE ORIENTATION if desired



ASTRONAUT
4.5mm x 6.5mm



ROCKET
3.5mm x 6mm



PLANET
6.5mm x 3.25mm



UFO
6.5mm x 4.75mm



ALIEN
4mm x 6mm



MERMAID
3.25mm x 6mm



PIN-UP GIRL
6mm x 4.25mm



SKULL
4mm x 6mm



SHAKA
6mm x 5mm



GRAPES
6mm x 6.75mm



KISS
6.5mm x 4.25mm



BUNNY
4mm x 6mm



LOTUS-A
6.25mm x 3.75mm



LOTUS-B
6.25mm x 4.25mm



FIRE
4mm x 6mm



HOURLASS
4mm x 6mm



PLANCHETTE
5mm x 6mm



BUDDHA
5mm x 6mm



KING CROWN
6mm x 4.5mm



QUEEN CROWN
6mm x 4.25mm



HEART CROWN
6mm x 3.75mm



CLUBS CROWN
6mm x 4mm

THREADLESS ENDS

Symbol

All designs on this page are available in Titanium & Niobium. Overall Size: Width x Length
 Assymetric items can be configured in a REVERSE ORIENTATION if desired




LIGHTNING-A
2.5mm x 6mm




LIGHTNING-B
2.5mm x 6mm



VORTEX
8.25mm x 8.25mm



BURST-A
8mm x 8.25mm



BURST-B
6.5mm x 5.5mm



ARROW-A
2.25mm x 7mm



ARROW-B
2.25mm x 7mm



ARROW-C
2.25mm x 7mm




ARROW-D
2.25mm x 7mm




ARROW-F
3.25mm x 6mm



ARROW-G
3.25mm x 6mm



HEART-A
6mm x 6.75mm



HEART-B
3.5mm x 3mm



CRESCENT-A
5.7mm x 6mm




CRESCENT-B
2mm x 5mm



TEARDROP-A
2.5mm x 6mm



TEARDROP-B
2.5mm x 6mm



SWORD
4.5mm x 9.75mm



DAGGER
2.5mm x 7mm

THREADLESS ENDS

Symbol

All designs on this page are available in Titanium & Niobium. Overall Size: Width x Length
 Assymmetric items can be configured in a REVERSE ORIENTATION if desired



DOLLAR
3mm x 4.5mm



EURO
4.25mm x 5.5mm



POUND
4.25mm x 5.5mm



RUPEE
4mm x 5.5mm



YEN
4.25 x 5.5mm



CROSS
Sm - 4.25mm x 6mm
Lg - 5.5mm x 8mm



CELTIC CROSS
4.25mm x 6mm



HAMSA
3.5mm x 4.5mm



ICHTHUS
6mm x 4mm



STAR OF DAVID
5.5mm x 6.5mm



PENTAGRAM
5.75mm x 5.75mm



OM
6.5mm x 5.5mm



ANKH
4mm x 7mm



TRINITY KNOT
6mm x 5.5mm



TRISKELE
6mm x 5.75mm



TREBLE CLEF
2.5mm x 6mm



8TH NOTE
4.25mm x 6mm



16TH NOTE
5.25mm x 6mm

THREADLESS ENDS

FAUNA

All designs on this page are available in Titanium & Niobium. Overall Size: Width x Length
 Assymetric items can be configured in a REVERSE ORIENTATION if desired



BUTTERFLY-Lg
8.75mm x 6mm



BUTTERFLY-Sm
6.5mm x 6.5mm



SCARAB
4mm x 6.5mm



DRAGONFLY
6.5mm x 6.5mm



DOLPHIN-Lg
8mm x 7mm



DOLPHIN-Sm
6mm x 5.25mm



SNAKE-Lg
6mm x 10mm



SNAKE-Sm
3.5mm x 6mm



SERPENT
6mm x 6mm



BAT
6mm x 2.25mm



LOBSTER
4.25mm x 6mm



CROW
7mm x 4mm



HAWK
7.5mm x 4mm



SPADEFISH
5mm x 6mm



OCTOPUS
7mm x 6mm



BUCRANIUM
6mm x 6mm



THUNDERBIRD
6.25mm x 4.5mm



SPIDERWEB
7.75mm x 7.75mm

Threadless Ends Zodiac

All designs on this page are available in Titanium & Niobium. Overall Size: Width x Length
Assymetric items can be configured in a REVERSE ORIENTATION if desired

					
ARIES 5mm x 3.5mm	TAURUS 5mm x 4.75mm	GEMINI 3.75mm x 5mm	CANCER 5mm x 4.5mm	LEO 3.75mm x 5mm	VIRGO 5.5mm x 5mm
					
LIBRA 5.25mm x 3mm	SCORPIO 5.25mm x 4.5mm	SAGITTARIUS 2mm x 5.5mm	CAPRICORN 3.5mm x 5mm	AQUARIUS 5.25mm x 3.5mm	PISCES 3mm x 5mm
					
RAM 5mm x 4mm	BULL 5mm x 4.75mm	TWINS 5mm x 5mm	CRAB 5mm x 4.5mm	LION 5mm x 4.75mm	VIRGIN 4.5mm x 5.5mm
					
BALANCE 5mm x 4.5mm	SCORPION 4mm x 5mm	ARCHER 3.5mm x 5.5mm	GOAT 5mm x 5mm	BHEESTY 5mm x 5mm	FISH 5mm x 4.75mm

Faceted Round Birthstones

Aquamarine 1.5mm		Sapphire 1mm, 1.5mm		Amethyst 1mm, 1.25mm, 1.5mm		Pacific 1.5mm	
Mint Green 1mm, 1.25mm 1.5mm		Emerald 1.5mm		Pink CZ 1mm, 1.25mm, 1.5mm		White Opal 1.5mm	
Arctic Blue 1.5mm		Peridot 1.5mm		Garnet 1.5mm		Black Opal 1.5mm	
Blue Zircon 1mm		Citrine 1.5mm		Ruby 1.5mm			
Ocean Gray 1.5mm,		Black CZ 1mm, 1.25mm 1.5mm		Champagne 1mm, 1.25mm, 1.5mm			



Princess Cut

1.5mm & 2mm Faceted Princess Cut

Aquamarine, Mint Green, Arctic, Blue Zircon, Black CZ, Amethyst, Pink CZ, Ruby, Champagne, Frosty Mint & Orange Garnet



Marquise Cut

1.5mm x 3mm Black CZ, Pink CZ, Champagne
2mm x 4mm Black CZ
2.5mm x 5mm Black CZ

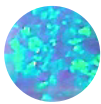


Pear Cut

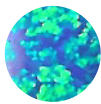
2mm x 3mm Champagne, Amethyst
3mm x 4mm Champagne, Amethyst, Tanzanite

Lab Opal

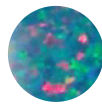
Round Cabochon Cut | For Bezel Setting only



Azure



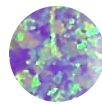
Pacific



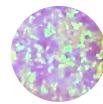
Teal



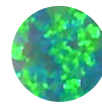
White



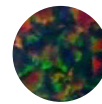
Purple



Pink



Kiwi



Black



Fire



Fuchsia



Lavender

Marquise Cabochon Cut
2mm x 3mm

Azure, Pacific, Teal, Light Pink, Medium Pink, Black, Fire, Lavender, Red

Pear Cabochon Cut
2mm x 3mm

Azure, Pacific, Teal, Light Pink, Medium Pink, Black, Fire, Lavender, Red

Diamonds

1.5mm

VS White Diamond

1.5mm

Black Diamond

Lifetime Limited Warranty

ALL JEWELRY GUARANTEED FOR LIFE AGAINST DEFECTS IN MATERIALS AND WORKMANSHIP EXCEPT WHERE OTHERWISE NOTED. ANY RETURNED MERCHANDISE MUST HAVE A RETURNED MATERIALS AUTHORIZATION NUMBER ISSUED BY INTRINSIC BODY.

Forum Selection & Venue

Any dispute that arises between you and Intrinsic Body relating to a Return Request will be subject to the laws of the State of California. By initiating a Return Request, you also agree that the Superior Court for the State of California, County of San Francisco is the appropriate venue to resolve any legal action.

Attorneys' Fees & Costs; Mediation

In the event of a dispute relating to a Return Request, the prevailing party shall be entitled to an award of reasonable attorneys' fees and costs. In any dispute arising from a Return Request, the prevailing party is entitled to attorney fees if, and only if, it has attempted to resolve the matter through mediation before commencing the legal action.

Effective Date & Version

Intrinsic Body may unilaterally update the terms and contents of this Return Policy & Procedure at any time, without notice. The Effective Date is January 1, 2022. This is Version 2.0 of the Return Policy & Procedure.

RETURN POLICY and LIMITED WARRANTY

For nearly two decades, Intrinsic Body, has been a world leader in premium quality body jewelry. It is extremely rare that a piece of jewelry needs to be returned to us. However, as with any jewelry, care must be taken to ensure years of enjoyment. Should you need to send back a piece for repair or replacement, we have an easy to follow Return Procedure (see below).

Limited Warranty

Every product sold by Intrinsic Body, except for the Threaded Stone Gemballs, has a limited warranty against any manufacturer's defects (e.g., defects caused exclusively by the workmanship, or materials used to create the piece of jewelry) (the "Limited Warranty"). Intrinsic Body, in its sole discretion, may repair, replace, or provide store credit to you if you complete a Return Request as outlined below and if Intrinsic Body determines the Limited Warranty applies to the subject of your Return Request.

The Limited Warranty does not extend or apply to the Threaded Stone gemballs because the Threaded Stone Gemballs are made with adhesive (glue) that has a unique bonding property that varies with each individual stone. Although problems are rare, Intrinsic Body recommends keeping some spares in stock.

Return Procedure :

Follow the steps on the next page to ensure that your Return Request is processed swiftly

Return Procedure :

- Send an email to Intrinsic Body at tech@intrinsicbody.com to make a return request (the “Return Request”).
- In the subject line of the email write “RETURN REQUEST” (use all caps).
- In the body of the email: (a) explain why you would like to return the item, (b) provide your invoice number*, (c) provide a photograph of the item you wish to return in its current state, and (d) the best telephone number to call to reach you between 9:00 am and 4:00 pm PST, Monday through Friday. Once Intrinsic Body reviews your Return Request, verifies your invoice number, and determines that the Limited Warranty is likely to cover the piece, then Intrinsic Body will provide you with a Return Materials Authorization Number (an “RMA No.”)
- Place a copy of the Return Request (i.e., a print-out of your email) in the box along with the piece of jewelry that you will ship to Intrinsic Body. Write “RMA” and your entire RMA No. in large, dark numbers on the outside of the box.

Please review and follow the United States Postal Service’s instructions for shipping small items of jewelry through the mail:

Odd-Shaped Items in Paper Envelopes:

Pens, pencils, key rings, bottle caps, and other similar odd-shaped items are not permitted in letter-size or paper envelopes to prevent damage during postal processing. If an odd-shaped item is not properly wrapped, it could burst through the envelope and cause injury to employees and damage to USPS processing equipment. Flat-size automation mail is subject to the uniform thickness requirement in 101.2.4.

***DO NOT MAIL JEWELRY TO Intrinsic Body IN A PLAIN PAPER ENVELOPE. IT WILL BE RETURNED-TO-SENDER UNOPENED AND UNPROCESSED.**

You will be responsible for the costs and fees (and any damage) associated with shipping the piece to and from us.



For sales inquiries please contact us at:

intrinsicbody@gmail.com

www.intrinsicbody.com

© Intrinsic Body 2024

Prices subject to change

without notice