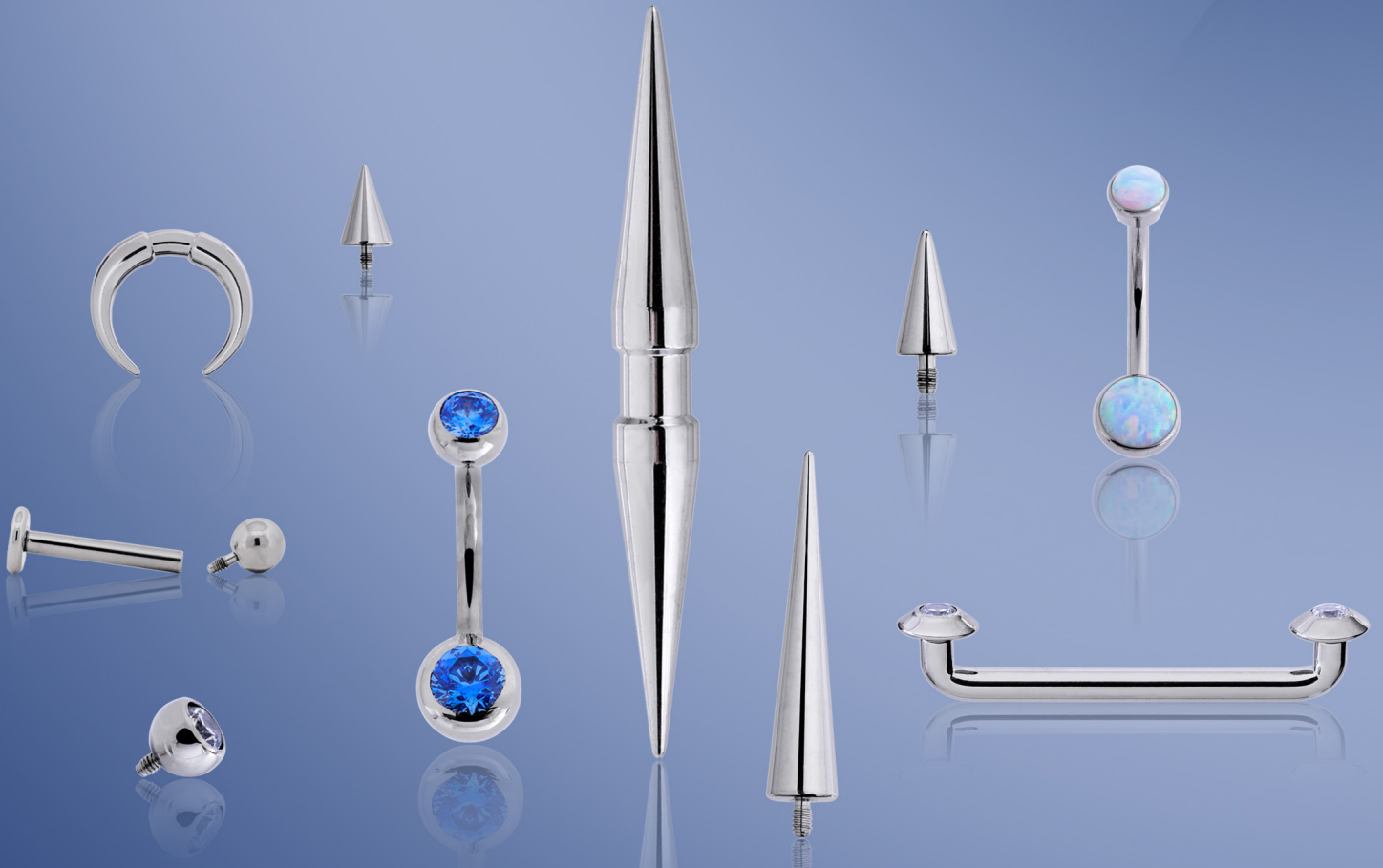


2025 stainless steel



INTRINSIC
precision body jewelry

WHAT'S BEHIND THE INTRINSIC BODY BRAND?

*Our master jewelers expertise and knowledge comes from an extensive background in industrial engineering, specifically in the aeronautical and medical fields where precision is key. This knowledge and expertise informs every aspect of the **INTRINSIC BODY** brand, from design specifications, fabrication methods and techniques to the selection and design of components and equipment used and the best workflow practices implemented to produce each piece.*

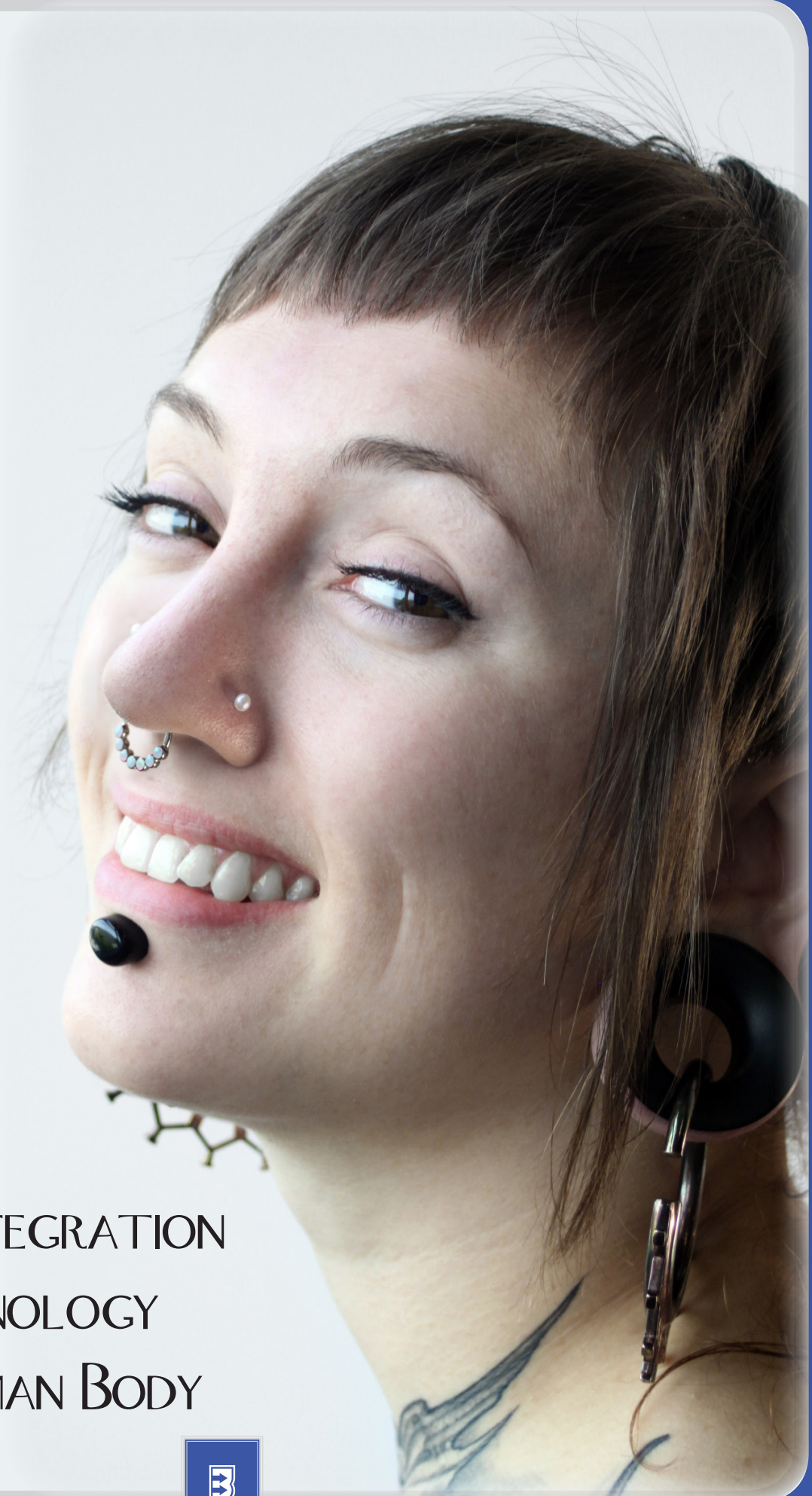
OUR PHILOSOPHY

*Approaching the design and creation of fine body jewelry like the manufacture of a precision jet engine or medical device makes sense for every element that goes into the work to be of optimum quality. Therefore, only the highest grade materials are used at **INTRINSIC BODY**: medical implant grade titanium and stainless steel, fine gold, and semiprecious gemstones. All materials are chosen for their intrinsic beauty and biocompatibility. Every piece of body jewelry produced at **INTRINSIC BODY** is made with the promise that your jewelry will be an intrinsic part of you for many years to come. We endeavor to create pieces that will stand the test of time in every way.*

QUALITY

BEAUTY

PRECISION



MICRO – INTEGRATION
OF TECHNOLOGY
IN THE HUMAN BODY



IMPLANT GRADE STEEL

Gem Navel Curves

Lengths: 1/4", 5/16", 3/8", 7/16", 1/2"

Mini G N C 3.5mm fixed gem 14g	
Single Gem	Double Gem



Medium G N C 5.0mm fixed gem 14g	
Single Gem	Double Gem



Large G N C 6.0mm fixed gem 14g or 12g	
Single Gem	Double Gem



LabOpal Cabochons



Purple



Teal



Pacific



Fire



Kiwi



Azure



White



Pink

(Black & Purple Opal not shown)

Faceted Birthstones



Peridot



Sapphire



Blue Zircon



Emerald



Pink Zircon



Amethyst



Garnet



Aquamarine

(Mint Green & Arctic Blue not shown)



Barbells

gauge	Straight	Post Only	Curved	Post Only	Circular	Post Only	Surface	Bar Only	J-Barbell	Bar Only
16g	Straight		Curved		Circular		Surface		J-Barbell	
14g										
12g										
10g										
8g										
										
							1/16", 3/32" or 1/8" Rise Height			

Threaded Plain Ends



Ball

3/32"	16g
1/8"	16g 14g
5/32"	14g 12g
3/16"	14g 12g 10g
7/32"	14g 12g 10g 8g
1/4"	10g 8g



Spike

14g	3mm x 6mm
	3mm x 9mm
	4mm x 12mm
	4mm x 19mm
	5mm x 3mm
10g	5mm x 5mm
	4mm x 9mm

Base diameter x Length



Disc

3.0mm	16g
4.0mm	16g 14g
5.0mm	14g



Dome

2.5mm	14g
-------	-----

Threaded Gem Ends

size	
1.75mm 16g	Bezel
2.0mm 16g - 14g	
2.5mm 16g - 14g	
4.0mm 14g	Bezel



size	
2.0mm 16g - 14g	Cabochon
3.0mm 16g - 14g	Cabochon



size	
1.5mm 16g - 14g	Prong
2.0mm 14g	
2.5mm 14g	
3.0mm 14g	



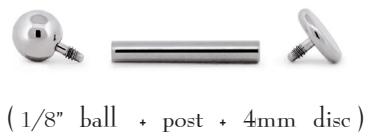
size	
3/16" 14g	Steel Gemball



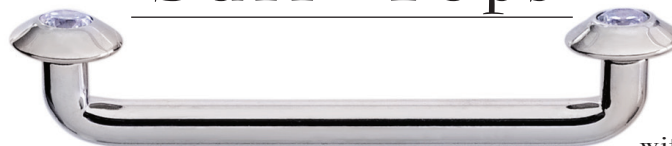
Threaded Labret

3-PIECE LABRET

16g
14g



Surf Tops



Surface Barbell
with Stainless Surftops



4mm Steel Surf Top with 2mm CZ stone

4.0mm

Nose Screws

3/4" length, 18g - 20g

mm size	style
1.5	Prong Faceted
2.0	Prong Faceted
2.5	Prong Faceted
1.25	Bezel Faceted
1.5	Bezel Faceted
2.0	Bezel Faceted
2.0	Bezel Cabochon
1.5, 1.75, or 2.0	Ball
1.5, 1.75	Disc



Insertion Tapers



18g	cup or pin	2-1/2" length	1-1/2" length
16g	cup or pin		
16g	thread		
14g	cup or pin		
14g	thread		
12g	cup or pin		
12g	thread		
10g	cup or pin		
8g	cup or pin		

New!

Captive Gems



-	1.5mm
-	2.0mm
-	2.5mm
-	3.0mm

Septum Circles



16g	5/16" ID , 3/8" ID
14g	5/16" ID , 3/8" ID
12g	5/16" ID , 3/8" ID
10g	3/8" ID , 7/16" ID

Septum Spikes

16g	1"	1-3/16"
14g	1"	1-3/16"
12g	1"	1-1/4"
10g	1-5/16"	1-1/2"
8g	1-3/8"	1-5/8"
6g	1-1/2"	1-11/16"



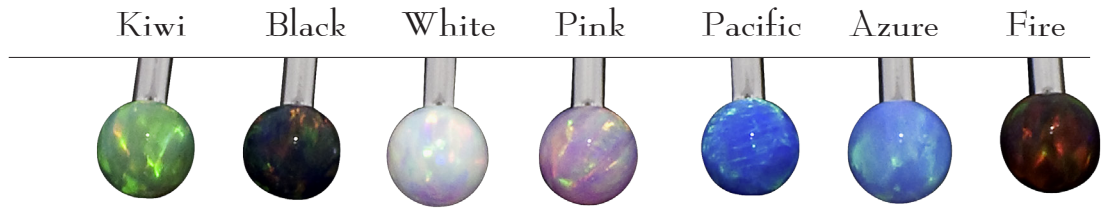
Threaded Lab Opal Balls

14g : 2.5mm, 3.0mm, 4.0mm, 5.0mm

16g : 2.5mm, 3.0mm, 4.0mm

Opal Ball

2.5mm
3mm
4mm
5mm



Threaded Natural Stone Balls

14g : 3.0mm, 4.0mm, 5.0mm, 6.0mm

16g : 3.0mm, 4.0mm

Stone Ball

3mm
4mm
5mm
6mm



Pearls

3mm
4mm
5mm



Captive Opal Balls

2.5mm
3mm
4mm
5mm

Kiwi, Black, White, Pink, Pacific, Azure, Fire, Purple, Teal

Because the Stone, Opal, and Pearl Gemballs are made with adhesive, and each material has different bonding properties, we do not accept returns or refunds for any reason on this product. Although problems are rare, we recommend keeping some extras on hand.



Faceted Round Birthstones

<p>Aquamarine 1.5mm, 2mm, 2.5mm, 3mm, 4mm, 5mm & 6mm</p> 	<p>Sapphire 1mm, 1.5mm, 2mm, 2.5mm, 3mm, 4mm, 5mm & 6mm</p> 	<p>Amethyst 1mm, 1.25mm, 1.5mm, 2mm, 2.5mm, 3mm, 4mm, 5mm & 6mm</p> 	<p>Pacific 1.5mm, 2mm, 2.5mm, 3mm, 4mm, 5mm & 6mm Prong only in GNC</p> 
<p>Mint Green 1mm, 1.25mm, 1.5mm, 1.75mm, 2mm, 2.25mm, 2.5mm, 3mm, 4mm, 5mm & 6mm</p> 	<p>Emerald 1.5mm, 2mm, 2.5mm, 3mm, 4mm, 5mm & 6mm</p> 	<p>Pink CZ 1mm, 1.25mm, 1.5mm, 2mm, 2.5mm, 3mm, 4mm, 5mm & 6mm</p> 	<p>Fuchsia 4mm, 5mm & 6mm Prong only in GNC</p> 
<p>Arctic Blue 1.5mm, 2mm, 2.5mm, 3mm, 4mm, 5mm & 6mm</p> 	<p>Peridot 1.5mm, 2mm, 2.5mm, 3mm, 4mm & 5mm</p> 	<p>Garnet 1.5mm, 2mm, 2.5mm, 3mm, 4mm, 5mm & 6mm</p> 	<p>White Opal 1.5mm, 2mm, 2.5mm, 3mm, 4mm, 5mm & 6mm Prong only in GNC</p> 
<p>Blue Zircon 1mm, 3.5mm, 4mm, 5mm & 6mm</p> 	<p>Citrine 1.5mm, 2mm, 2.5mm, 3mm, 4mm, 5mm & 6mm</p> 	<p>Ruby 1.5mm, 2mm, 2.5mm, 3mm, 4mm & 6mm</p> 	<p>Black Opal 1.5mm, 2mm, 2.5mm, 3mm, 4mm, 5mm & 6mm Prong only in GNC</p> 
<p>Ocean Gray 1.5mm, 2mm, 2.5mm & 3mm</p> 	<p>Black CZ 1mm, 1.25mm, 1.5mm, 1.75mm, 2mm, 2.25mm, 2.5mm, 3mm, 4mm, 5mm & 6mm</p> 	<p>Champagne 1mm, 1.25mm, 1.5mm, 2mm, 2.5mm, 3mm, 4mm, 5mm & 6mm</p> 	

STONE COLORS

Lab Opal

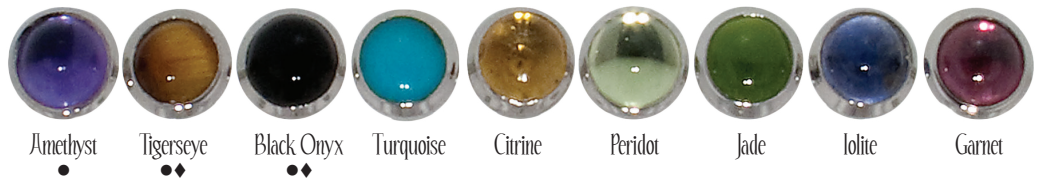
1.5mm, 2mm, 2.5mm, 3mm, 4mm, 5mm & 6mm Cabochon Cut



Rose Cut



Natural Cabochon



2mm Nose Screws & 2mm Threaded Cabochon Ends only | ● Available in 3mm ◆ Available in 4mm

Princess Cut



1.5mm & 2mm Princess Cut
Aquamarine, Mint Green, Arctic, Blue Zircon,
Black CZ, Amethyst, Pink CZ,
Ruby, Champagne & Frosty Mint

Genuine Diamonds

size	white diamonds
1.5mm	VS
2.0mm	VS
2.5mm	VS
3.0mm	VS

size	black diamonds
1.5mm	Black
2.0mm	Black
2.5mm	Black

RETURN POLICY and LIMITED WARRANTY

For nearly two decades, Intrinsic Body, has been a world leader in premium quality body jewelry. It is extremely rare that a piece of jewelry needs to be returned to us. However, as with any jewelry, care must be taken to ensure years of enjoyment. Should you need to send back a piece for repair or replacement, we have an easy to follow Return Procedure (see below).

Limited Warranty

Every product sold by Intrinsic Body, except for the Threaded Stone Gemballs, has a limited warranty against any manufacturer's defects (e.g., defects caused exclusively by the workmanship, or materials used to create the piece of jewelry) (the "Limited Warranty"). Intrinsic Body, in its sole discretion, may repair, replace, or provide store credit to you if you complete a Return Request as outlined below and if Intrinsic Body determines the Limited Warranty applies to the subject of your Return Request.

The Limited Warranty does not extend or apply to the Threaded Stone gemballs because the Threaded Stone Gemballs are made with adhesive (glue) that has a unique bonding property that varies with each individual stone. Although problems are rare, Intrinsic Body recommends keeping some spares in stock.

Return Procedure :

Follow these steps to ensure that your Return Request is processed swiftly

Return Procedure :

- Send an email to Intrinsic Body at tech@intrinsicbody.com to make a return request (the “Return Request”).
- In the subject line of the email write “RETURN REQUEST” (use all caps).
- In the body of the email: (a) explain why you would like to return the item, (b) provide your invoice number*, (c) provide a photograph of the item you wish to return in its current state, and (d) the best telephone number to call to reach you between 9:00 am and 4:00 pm PST, Monday through Friday. Once Intrinsic Body reviews your Return Request, verifies your invoice number, and determines that the Limited Warranty is likely to cover the piece, then Intrinsic Body will provide you with a Return Materials Authorization Number (an “RMA No.”)
- Place a copy of the Return Request (i.e., a print-out of your email) in the box along with the piece of jewelry that you will ship to Intrinsic Body. Write “RMA” and your entire RMA No. in large, dark numbers on the outside of the box.

Please review and follow the United States Postal Service’s instructions for shipping small items of jewelry through the mail:

Odd-Shaped Items in Paper Envelopes:

Pens, pencils, key rings, bottle caps, and other similar odd-shaped items are not permitted in letter-size or paper envelopes to prevent damage during postal processing. If an odd-shaped item is not properly wrapped, it could burst through the envelope and cause injury to employees and damage to USPS processing equipment. Flat-size automation mail is subject to the uniform thickness requirement in 101.2.4.

***DO NOT MAIL JEWELRY TO Intrinsic Body IN A PLAIN PAPER ENVELOPE. IT WILL BE RETURNED-TO-SENDER UNOPENED AND UNPROCESSED.**

You will be responsible for the costs and fees (and any damage) associated with shipping the piece to and from us.

Lifetime Limited Warranty

ALL JEWELRY GUARANTEED FOR LIFE AGAINST DEFECTS IN MATERIALS AND WORKMANSHIP EXCEPT WHERE OTHERWISE NOTED. ANY RETURNED MERCHANDISE MUST HAVE A RETURNED MATERIALS AUTHORIZATION NUMBER ISSUED BY INTRINSIC BODY.

Forum Selection & Venue

Any dispute that arises between you and Intrinsic Body relating to a Return Request will be subject to the laws of the State of California. By initiating a Return Request, you also agree that the Superior Court for the State of California, County of San Francisco is the appropriate venue to resolve any legal action.

Attorneys' Fees & Costs; Mediation

In the event of a dispute relating to a Return Request, the prevailing party shall be entitled to an award of reasonable attorneys' fees and costs. In any dispute arising from a Return Request, the prevailing party is entitled to attorney fees if, and only if, it has attempted to resolve the matter through mediation before commencing the legal action.

Effective Date & Version

Intrinsic Body may unilaterally update the terms and contents of this Return Policy & Procedure at any time, without notice. The Effective Date is January 1, 2022. This is Version 2.0 of the Return Policy & Procedure.



FOR SALES INQUIRIES PLEASE CONTACT US AT:

EMAIL: INTRINSICBODY@GMAIL.COM

WEB: WWW.INTRINSICBODY.COM

© Intrinsic Body 2024
Prices subject to change without notice